

UNEMPLOYMENT, POVERTY & INEQUALITY ARE DEEPENING IN SOUTH AFRICA.

Social security is a well-known net to protect people and assists in correcting income distribution injustice. According to the Constitution, everybody has a right to have access to social assistance if they are unable to support themselves or their family.



BUT THERE ARE MANY GAPS IN SOCIAL ASSISTANCE.

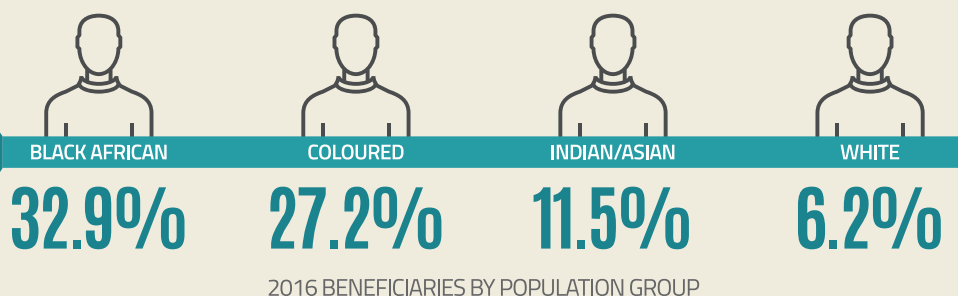
18-59

YEAR OLD ABLE-BODIED WORKING PEOPLE DO NOT RECEIVE GRANTS, AND THE CHILD SUPPORT GRANT FALLS FAR SHORT OF THE AMOUNT NEEDED TO SUPPORT A CHILD IN ANY MEANINGFUL WAY.

ALTHOUGH, SOCIAL GRANTS HAVE GONE SOME WAY TOWARDS REDUCING THE NUMBER OF PEOPLE LIVING IN POVERTY, THESE ARE NOT ENOUGH WHEN WE LOOK AT THE FIGURES BELOW. THERE ARE GRANTS FOR POOR CHILDREN, OLD AGE PEOPLE AND PEOPLE LIVING WITH DISABILITIES.



THERE ARE NO GRANTS FOR WORKING AGE PEOPLE, SO THEY MAY NEED TO RELY ON THE GRANT INCOME RECEIVED BY CHILDREN OR PENSIONERS.



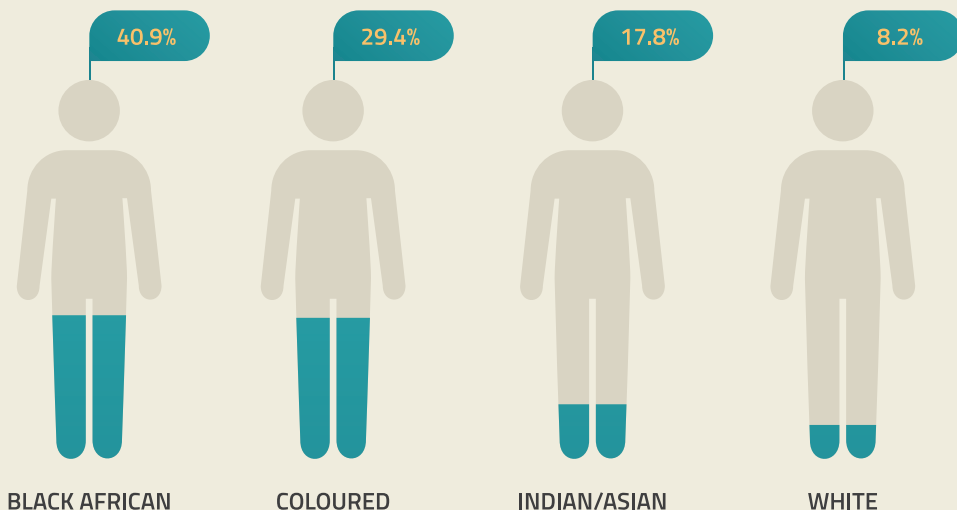


MORE THAN

50%

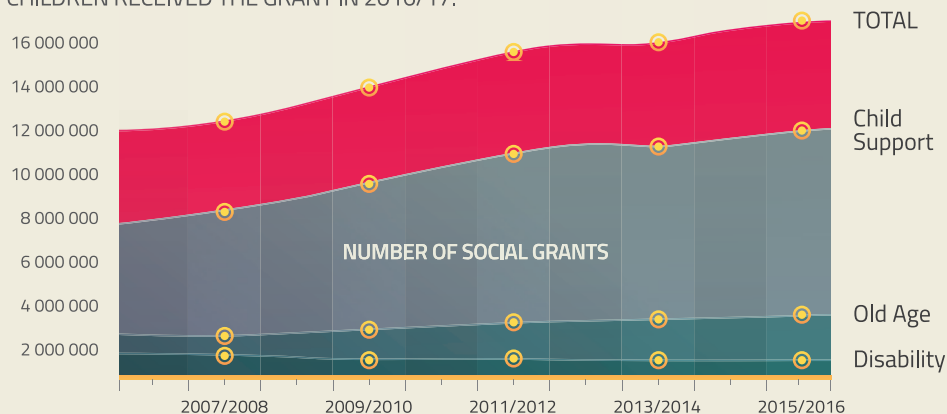
OF SOUTH AFRICA'S POPULATION IS POOR AND POVERTY STILL REFLECTS THE RACIAL CATEGORIES LEGISLATED DURING THE APARTHEID YEARS.

THIS INCREASE IN POVERTY MAKES SENSE ONCE YOU LOOK AT THE **UNEMPLOYMENT** FIGURES, WHICH SHOW THAT IN 2017, 1 IN 3 PEOPLE WERE UNEMPLOYED.



SOCIAL GRANTS HAVE INCREASED OVER THE YEARS...

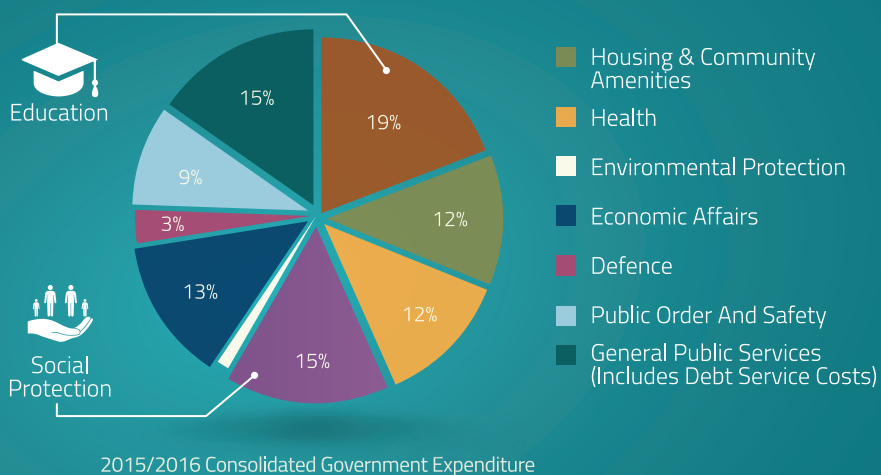
ESPECIALLY THE CHILD SUPPORT GRANT. MORE THAN 12 MILLION CHILDREN RECEIVED THE GRANT IN 2016/17.



...BUT, IN 2017, THE CHILD SUPPORT GRANT WASN'T ENOUGH TO COVER THE COST OF FOOD TO SURVIVE.



THE GOVERNMENT SPENDS A LARGE SHARE OF ITS BUDGET ON SOCIAL PROTECTION, EXCEEDED ONLY BY EXPENDITURE ON EDUCATION. BUT...



...THE PROPORTION OF THE TOTAL GOVERNMENT ALLOCATIONS TO SOCIAL GRANTS HAS BEEN FALLING.

FROM 9.8% IN THE 2008/9 FINANCIAL YEAR, SPENDING ON GRANTS ROSE TO OVER 10% IN 2011/12, BUT HAS FALLEN TO 9.41% IN 2015/16 – LOWER THAN THE 2008 FIGURE.

