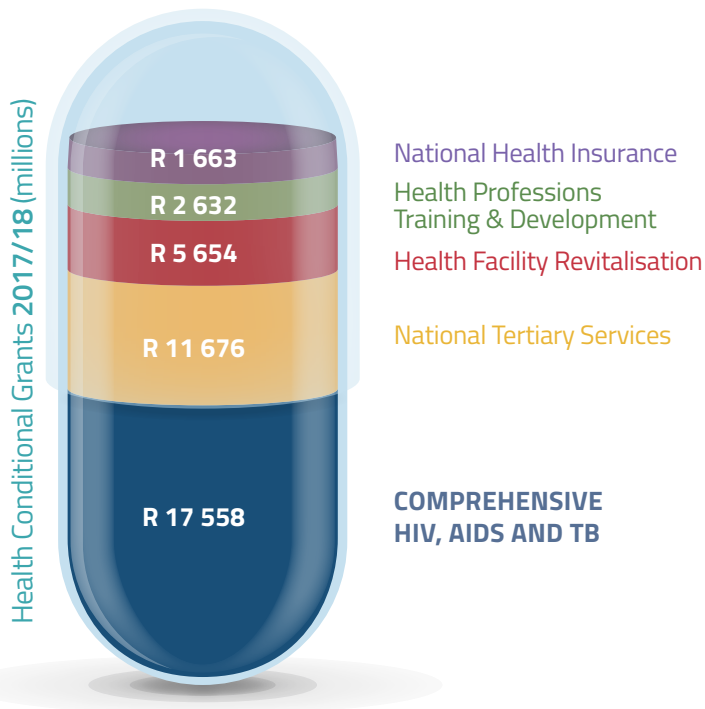


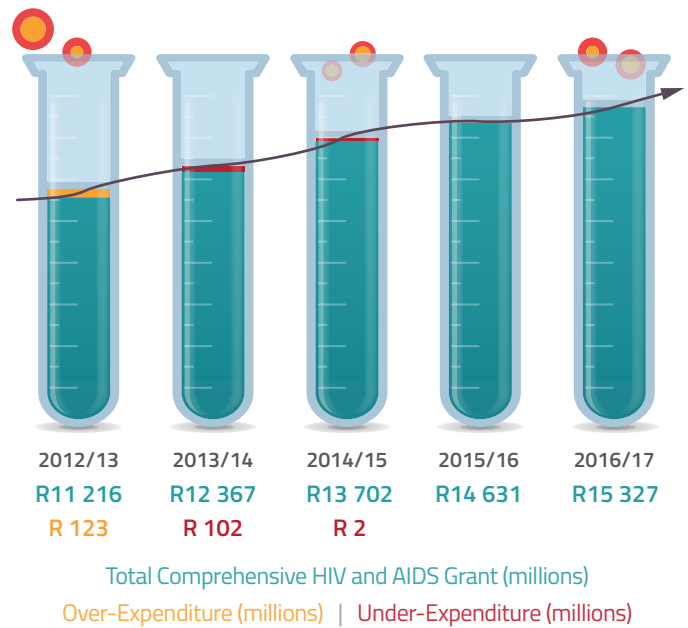
SOUTH AFRICA'S PUBLIC HEALTH CARE SERVICE FACES VERY REAL CHALLENGES BUT GOVERNMENT HAS, OVER THE YEARS, MADE SIGNIFICANT STRIDES TOWARDS INCREASING ACCESS TO HEALTH CARE. HERE, WE LOOK AT HOW FAR WE HAVE COME, AND HOW FAR WE STILL HAVE TO GO:



GOVERNMENT HAS PRIORITISED SPENDING ON HIV, AIDS AND TB:



GOVERNMENT HAS BEEN INCREASING ALLOCATIONS TO HIV, AIDS AND TB, AND HAS SPENT THIS MONEY EFFECTIVELY:



THE GOVERNMENT'S EFFORTS HAVE BORNE FRUIT.

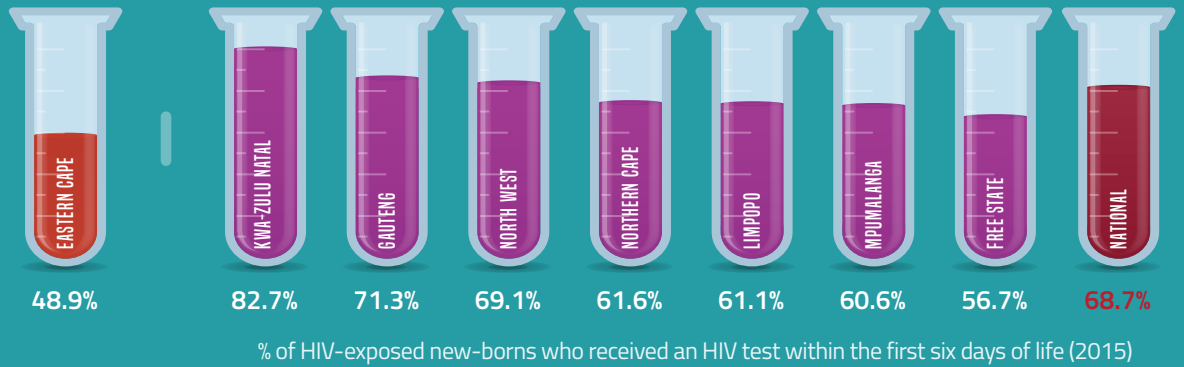
THE PERCENTAGE OF DEATHS IN SOUTH AFRICA DUE TO AIDS FELL BY 12.6% BETWEEN 2001 AND 2016:



¹This information is taken from Weyss, B., Webster, D and Selebalo, H 2017. Monitoring the Right of Access to Healthcare in South Africa: An analysis of health budgets and indicators. Studies in Poverty and Inequality Institute Working Paper #17.

BUT, WORRYING TRENDS REMAIN REGARDING NEW-BORNS EXPOSED TO HIV.

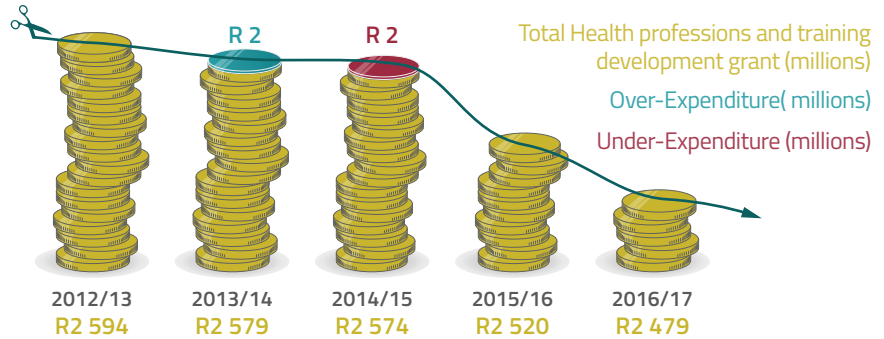
MORE THAN
50%
OF NEW-BORNS EXPOSED TO HIV IN THE EASTERN CAPE DO NOT RECEIVE AN HIV TEST WITHIN THE FIRST SIX DAYS OF LIFE:



THE PICTURE IS WORSE AT THE DISTRICT LEVEL. IN ALFRED NZO, 33.8% OF NEW-BORNS WERE TESTED, WHILE ONLY 24.5% WERE TESTED IN THE OR TAMBO DISTRICT.

WE STILL HAVE A LONG WAY TO GO...

THE GOVERNMENT HAS BEEN STEADILY CUTTING BUDGETS MEANT FOR THE TRAINING OF MEDICAL SPECIALISTS.



WELL TRAINED, ADEQUATELY PAID AND MOTIVATED HEALTH WORKERS ARE IMPORTANT FOR A FUNCTIONING HEALTH SYSTEM.

BUT AUSTERITY MEASURES ARE HAVING DEVASTATING EFFECTS ON THE NUMBER OF FILLED POSITIONS IN PUBLIC HEALTH CARE:



FILLED POSTS INCREASED BY 80 679 BETWEEN 2006 & 2012



FILLED POSTS DECREASED BY 5 473 BETWEEN 2012 & 2016



RURAL PROVINCES IN PARTICULAR SUFFER WITH MEDICAL SPECIALIST SHORTAGES.



1.3 MEDICAL SPECIALISTS PER 100 000 PEOPLE IN LIMPOPO IN 2016.



27.2 MEDICAL SPECIALISTS PER 100 000 PEOPLE IN THE WESTERN CAPE IN 2016.

THE SERVICES OFFERED AT PUBLIC HEALTH CARE FACILITIES ALSO REMAIN INADEQUATE IN MANY RESPECTS.

THE NUMBER OF PREGNANT WOMEN WHO DIED AS A RESULT OF CHILDBEARING BETWEEN 2007 & 2015, FOR EXAMPLE, INCREASED BY 60%:

